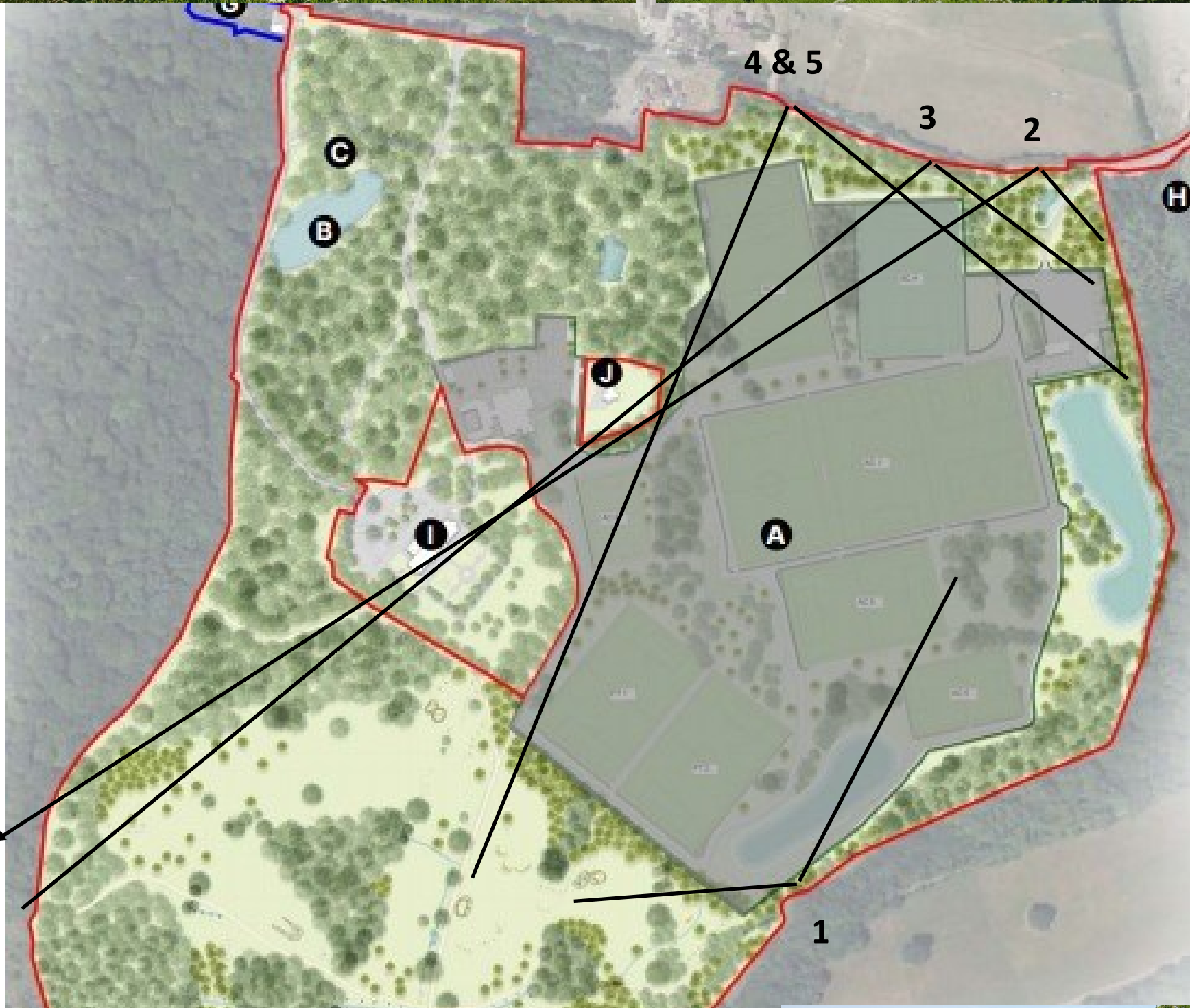


Views across Whitewebbs Park from publicly accessible footpaths and bridleways

Most of the proposed pitch area is currently visible from viewpoints on the footpaths and bridleways. Fencing and tree planting will destroy these views.

Viewpoints 2—5 are listed on the Local Plan as important (shown as 6 on the draft plan)



Viewpoint on the footpath with access gate to park



Looking North



Looking West

Spurs claim that only “glimpses” of the pitch area can be seen from footpaths.

Photos taken on Saturday 11th May 2024