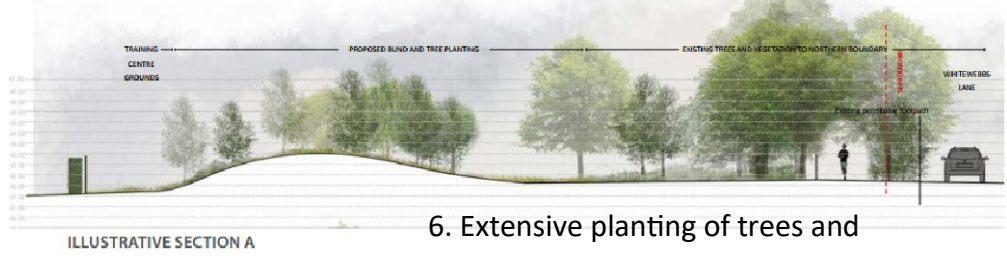


Please walk around Whitewebbs Park using this map to envisage the effects of the Planning Application from Tottenham Hotspur Limited—it is a lovely walk, at present.

10. New vehicle entrance to the Toby Carvery



6. Extensive planting of trees and bushes + earthworks(bund) + metal fencing, hedging to block access and views

9. Spurs entrance

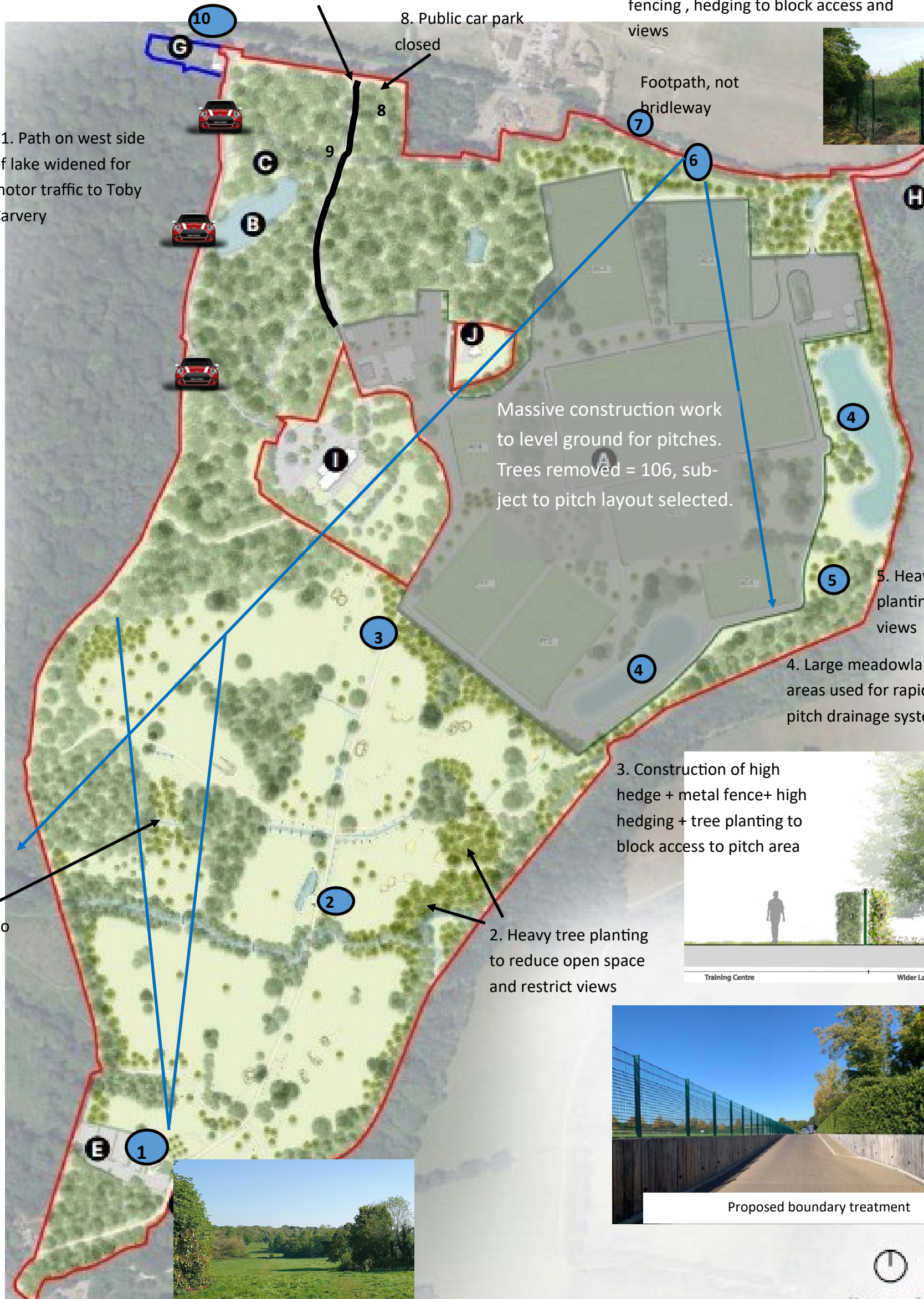
8. Public car park closed

Footpath, not bridleway



Existing Spurs Fencing and bund

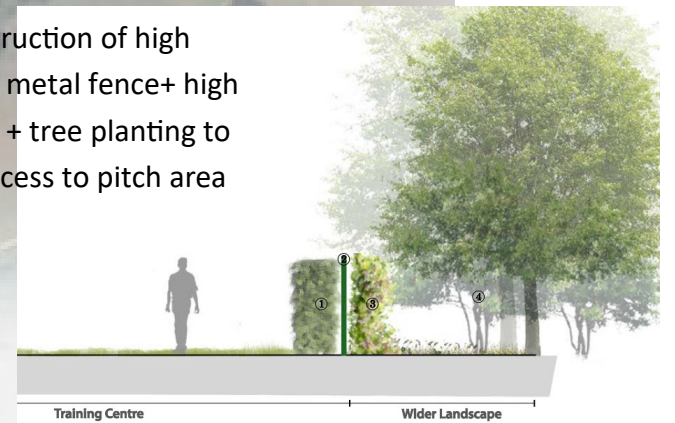
11. Path on west side of lake widened for motor traffic to Toby Carvery



5. Heavy tree and hedge planting to block access / views

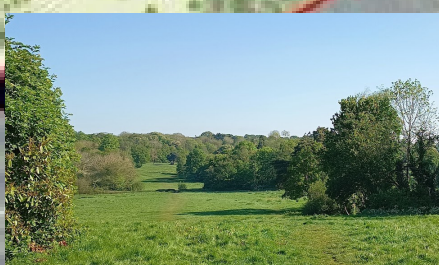
4. Large meadowland areas used for rapid pitch drainage system

3. Construction of high hedge + metal fence+ high hedging + tree planting to block access to pitch area



2. Heavy tree planting to reduce open space and restrict views

1. Tree planting to break the view



Proposed boundary treatment

Spurs planning application— As can be seen from this map from the planning application approximately half of the open landscape of Whitewebbs will be enclosed by fencing, hedging and tree planting. Even the openness of the remaining area will be reduced by extensive tree planting.

The priority for this scheme appears to be total privacy for the training ground. It is as if Spurs intend to build a fortified encampment using steel fencing, earthworks, high hedging and trees. The open landscape appropriate to Green Belt and parkland will be destroyed as will the peace and tranquility of the Lake area.