

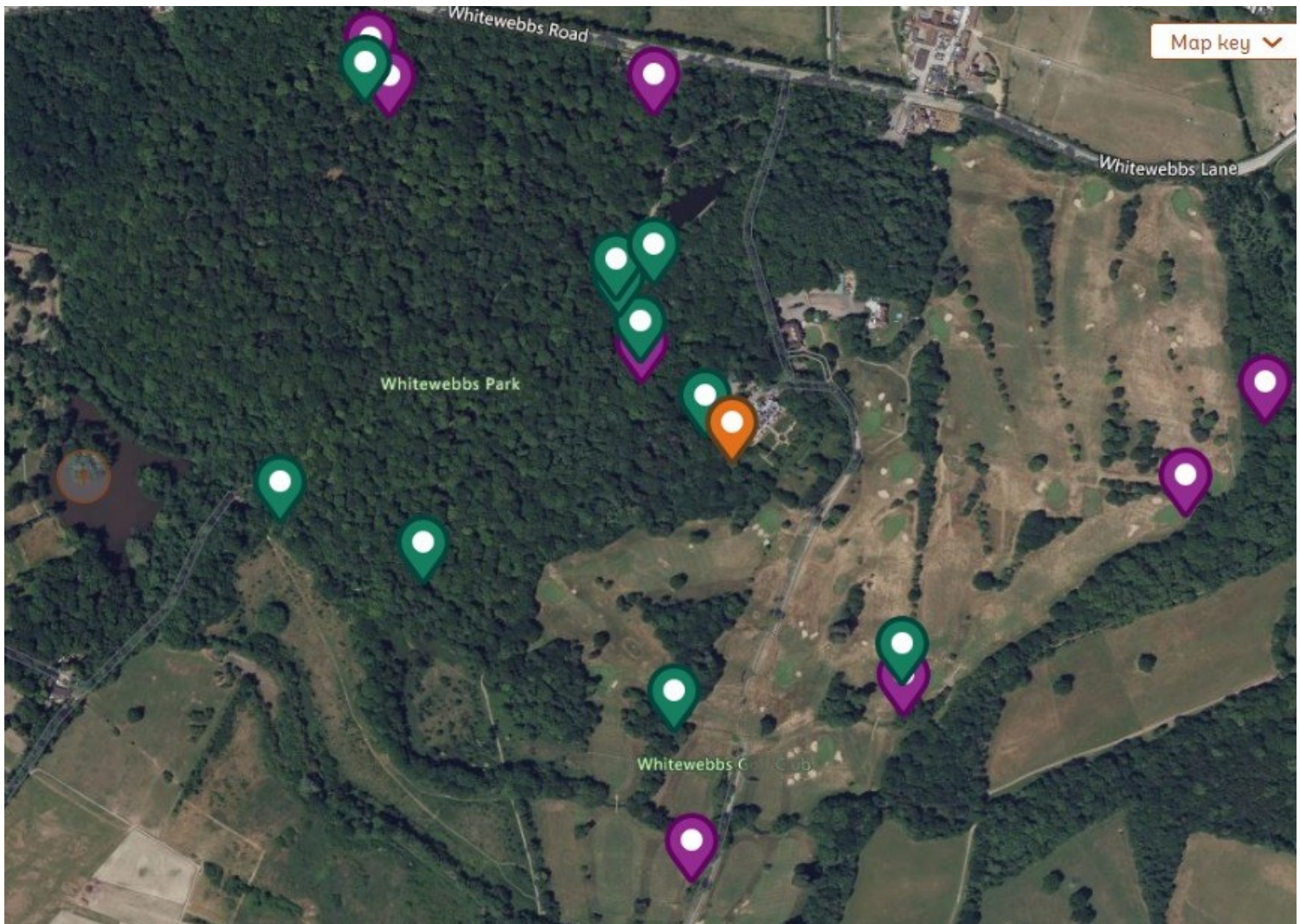
The Woodland Trust Ancient Tree Inventory

“Mapping the oldest and most important trees in the UK.

They can live for hundreds of years. And there are more of them in the UK than many other European countries.

Help protect our valuable tree heritage. Let us know if you see any ancient or old trees and put them on the map. There are already more than 190,000 trees listed but there are thousands more to add.”

<https://ati.woodlandtrust.org.uk/> for full information



Map key ^



This is the current map for Whitewebbs Park. It has been updated to include veteran and notable trees on the old golf course.

Five years ago no such trees had been recorded in Whitewebbs, why we do not know.

Mark Saunders has been measuring and reporting suitable specimens to the Woodland Trust to rectify the situation.

There may be more that meet the criteria. **Recording and reporting the fauna and flora of all our open spaces is essential to their preservation.**

We can all help to do this by recording plants, butterflies, insects, birds in our park. Please don't leave it others. The Big Butterfly Count starts on Friday 14th July and lasts for three weeks. All the details can be found here: <https://bigbutterflycount.butterfly-conservation.org/>