



# WHITEWEBBS PARK GOLF COURSE

SUMMARY OF  
TOTTENHAM HOTSPUR PROPOSALS



A scenic view of a river with ducks and trees. The river is in the foreground, with several ducks swimming. The background is filled with lush green trees and a clear blue sky. The scene is peaceful and natural.

“As with our existing Training Centre, close attention to detail will be paid to ensuring the site’s natural environmental habitat is maintained and enhanced and that all design is to the very highest standards.

Our proposals will enhance public access, improve opportunities for recreational and community use and build on the fantastic work that has been delivered by our Foundation in Enfield over the past decade. The new Women and Girls’ Football Academy will enable us to continue developing the game at grass roots level and to improve participation in the sport.

It would be the first of its kind in the UK and it would be in Enfield – an inspirational setting.”

“”

—

**DANIEL LEVY**  
CHAIRMAN, TOTTENHAM HOTSPUR





# INTRODUCTION

---

Tottenham Hotspur Football Club is proud to have been selected by Enfield Council as the highest scoring bidder to regenerate Whitewebbs Park Golf Course.

Our proposals meet the Council's objectives in providing a sustainable future for this important site and also respond to local community aspirations by providing enhanced public access and improve facilities.

The site presents a once in a generation opportunity to create a regionally significant asset for Enfield and we very much welcome the opportunity to respond to this challenge. As a leading professional sports club and adjoining landowner, we offer a unique combination of a passion for sport, leisure, education and inclusivity; an understanding of the local area; and the resources to deliver a scheme to the highest standards.

## OUR PROPOSAL IS BASED UPON:

- The enhancement of public access through improvements to footpaths and bridleways
- The restoration of part of the former Whitewebbs Park Golf Course back to parkland
- The redevelopment of the Southern Clubhouse to provide enhanced food and beverage facilities for visitors to the park
- The creation of a new Women and Girls' Football Academy with a focus on the development of grass roots football and widening female participation in the sport
- The restoration and conversion of the Northern Clubhouse as the centrepiece of this new Academy
- The opportunity to work with Enfield Council and stakeholders to establish one of the Country's first Habitat Banks to provide for the long term stewardship of Whitewebbs Wood
- The provision of education and training opportunities through the launch of our new Sports Turf Academy

# LOCATION

The Club is proposing to take a lease on part of the site (edged blue), with Whitewebbs Wood being retained in Council control and unchanged (edged red). Subject to further consultation and planning, the proposals include:

1. Ecological and recreational value of Whitewebbs Wood enhanced through public access and landscape improvements
2. Restoration of areas of historic parkland on site of former golf course.
3. Ecological and landscape improvements around Cuffley Brook
4. New Women & Girls' Football Academy centred on Northern Clubhouse and with playing pitches set out amongst ecological and landscape improvements
5. Ecological and landscape improvements to the northern boundary to provide a link into Dickenson's Meadow and the existing Training Centre beyond
6. Redevelopment of Southern Clubhouse to provide new food & beverage/visitor facilities amongst ecological and landscape improvements







# IMPROVEMENTS AND UPGRADES

---

Alongside the extensive ecological and landscape enhancements that will be made across the whole site, the proposal also includes upgrades to and investment in the statutory footpaths and bridleways for use by walkers, cyclists and horse riders. For example, damaged timber fencing will be repaired, wayfinding and information signage will be improved and the Club will seek to convert the permissive paths within its leased land to statutory bridleways.

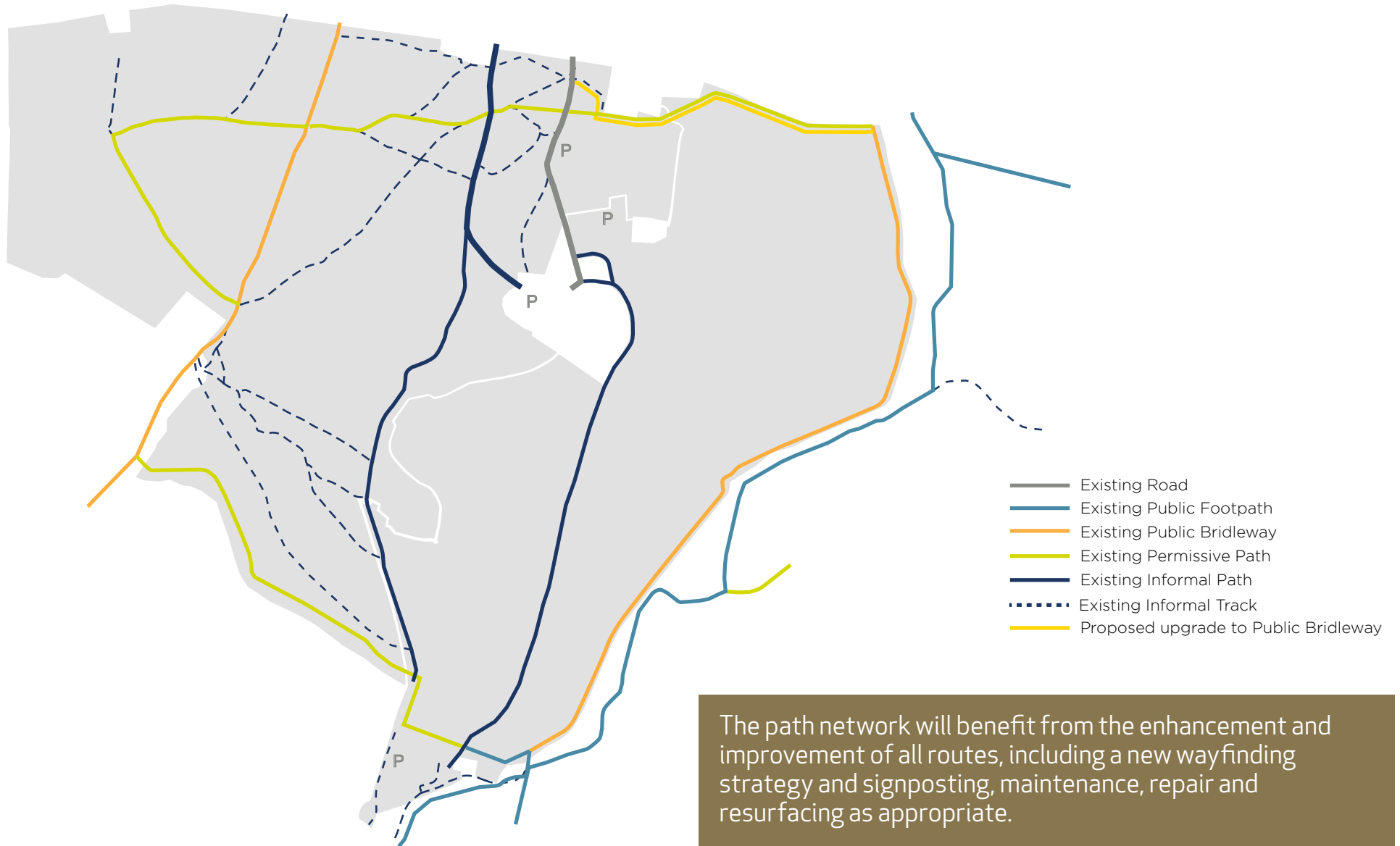
Subject to surveys and planning, the Club proposes to retain and convert the existing Northern Clubhouse to provide the principal built facility for the Women & Girls' Football Academy. New playing pitches will be laid out in consultation with eminent landscape architects and ecologists to ensure their assimilation into the countryside.

Subject to planning, the Club proposes to redevelop the Southern Clubhouse and café to provide significantly improved food, beverage and toilet facilities for visitors to the park. Both the café and toilet facilities will be open to all members of the public.

These enhancements will be secured either through direct works by the Club or from the Club's financial consideration for its lease on the site. The Club and the Council will focus on delivering early improvements.



# PUBLIC ACCESS







# ECOLOGICAL ENHANCEMENTS

---

The proposals will see ecological and landscape enhancements across the whole site, with the Council retaining control of Whitewebbs Wood which will remain unchanged and open to the public.

In addition to the restoration of the southern part of the former golf course, the proposals include ecological and landscape improvements to the northern boundary and around Cuffley Brook to the south.

The Club will seek ecological enhancements around the new playing pitches, for example through the introduction of wild flower meadow habitat.

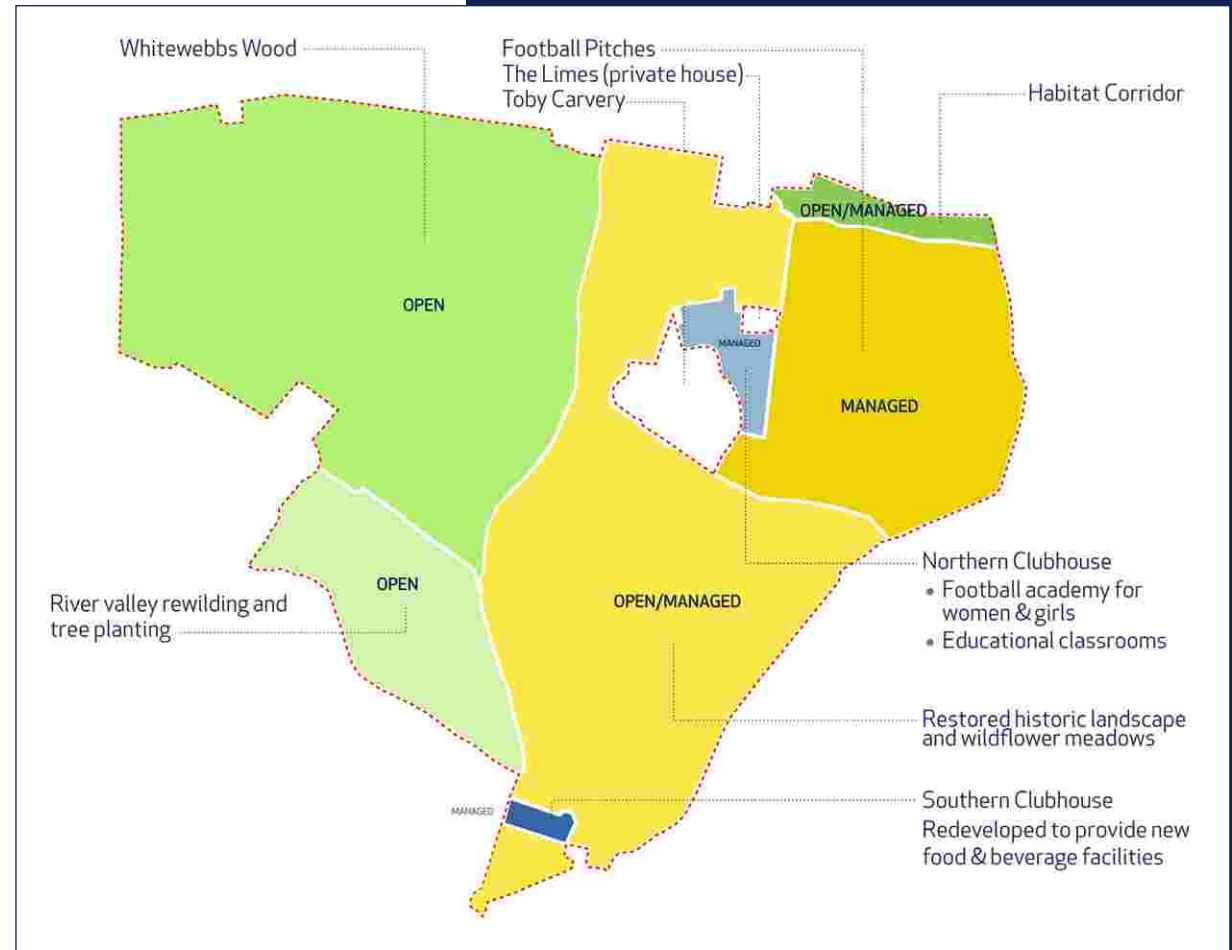


The Club also welcomes the opportunity to work with Enfield Council and stakeholders to establish one of the Country's first Habitat Banks to provide for the long term stewardship of Whitewebbs Wood.

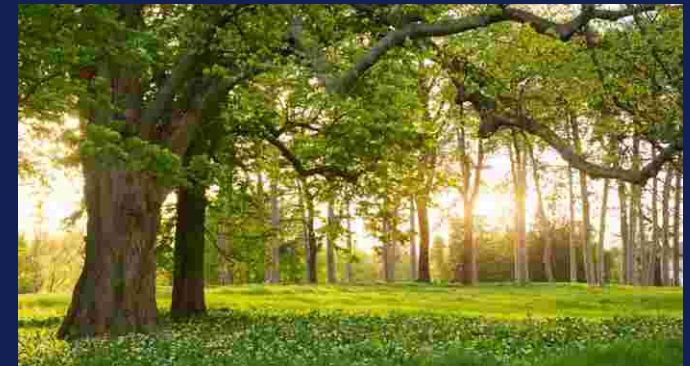
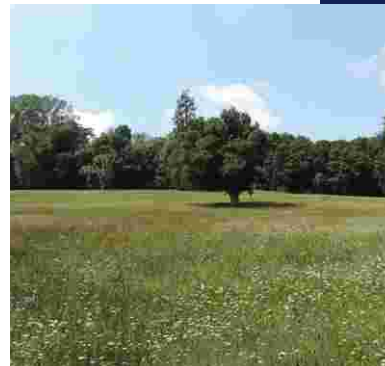


# RESTORED LANDSCAPE

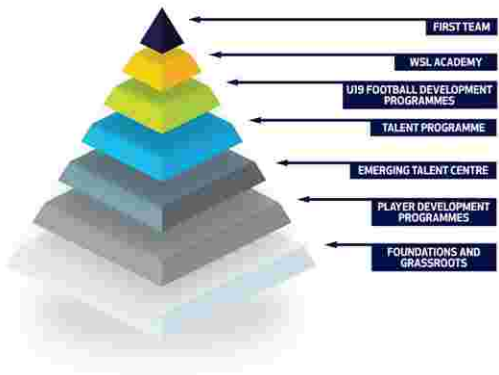
Subject to surveys and planning, parts of the former golf course are proposed to be returned to historic landscape and wildflower meadows, informed by the layout of the original 19th Century parkland landscape, reinstating lost parkland trees and historic vistas.



These enhancements would provide opportunities for community and educational events and activities such as sporting competitions, guided trails, seasonal wildlife events and children's events linked to local schools.







# AN INSPIRATIONAL FACILITY

With 2.5 million participants in England football is now the biggest women's team sport in the Country.

The Club is proposing the creation of a Women and Girls' Football Academy, taking inspiration from the World-class facilities on offer to the Men's First Team and Academy teams at its existing Training Centre. It will focus on the development of female football at grassroots level in the Borough and beyond.

The new Academy will work in conjunction with the Tottenham Hotspur Women's First Team, which gained professional status following promotion to the Barclays FA Women's Super League in 2019. It will be supported by the Club's Global Coaching Team and charitable Foundation, to create clear progression pathways from entry to elite level through player development programmes, to help Enfield Council grow participation levels in sport and leisure among women and girls.

The Club is also committed to the organic development and holistic support of our Coaching Excellence programme to continue the promise of creating the next generation of World-class female coaches, developing a hub-site that will create career opportunities and sustainable outcomes for female students from our local Borough - working as part of a wider club strategy to grow participation in girls and women's football

With over 2.5 million active participants, football is now the biggest women's team sport in the UK.

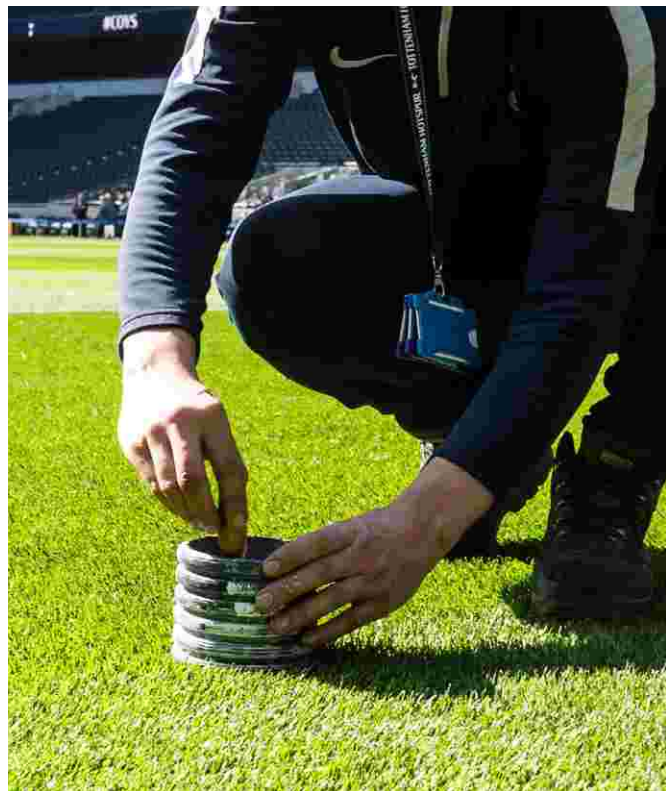




# EMPLOYMENT AND TRAINING OPPORTUNITIES

The proposals will also facilitate the launch of a Sports Turf Academy, administering and delivering a wide range of courses on site, via our external teaching partners.

Tottenham Hotspur aims to produce a new generation of exceptional sports turf, greenkeeping, horticultural and mechanical staff by giving the sports turf industry a world-class facility to educate students.



**“THE SPORTS TURF ACADEMY REPRESENTS A CHANCE TO DEVELOP AN INDUSTRY IN WHICH WE HAVE A WEALTH OF EXPERIENCE AND EXPERTISE, TO THE BENEFIT OF YOUNG PEOPLE SEEKING EMPLOYMENT AND TRAINING OPPORTUNITIES.”**

Daniel Levy, Chairman, Tottenham Hotspur





# SPURS IN THE COMMUNITY

Spurs has a long history of working with and in the local community in Enfield. In addition to fulfilling its legal obligations as part of Training Centre development, which included the delivery of over 70,000 coaching hours, the Club is involved in the following programmes:

**Premier League Kicks** – The programme has a long history of using the power of football and the value of sports participation to help young people at risk of becoming not in education, employment, or training in some of the most disadvantaged areas of the community to turn their lives around. This programme is currently being delivered at Oasis Academy; Craig Park; and Broomfield School.

**Project Search** – A programme that provides students with access to real working environments, taking part in 30 weeks of work placement within North Middlesex University Hospital; with a classroom-based support teaching employability skills with the aim of moving students into employment.

**Premier League Inspires** – An education programme, newly introduced in 2019, developed by the Premier League and professional football clubs with partnership support from The Professional Footballers Association and the Prince's Trust. The programme is aimed at young people between 11-25 who are at risk of not reaching their full potential; supporting them as they move through the education system and early adulthood.

This programme is currently being delivered at Enfield Grammar School and Enfield County School for Girls.

**Premier League Primary Stars** – Uses the appeal of the Premier League and professional football clubs to inspire children to learn, be active and develop important life skills. The overall aim of the project is to improve the quality and impact of sport in school by improving confidence in delivering PE in teaching staff and improving confidence in PE participation for the students. The programme brings Premier League coaches into primary schools to work with children and includes mentoring teachers to deliver extra-curricular clubs and classroom support.

This programme is currently being delivered at Wilbury Primary; St John and St James CofE Primary; Forty Hill Primary School (from next term); Hadley Wood Primary (next term); Firs Farm primary school (from next term); Meridian Angel primary school (from next term).

**Move4You** – Guided physical activity programme to anyone over 18 who has had a cancer diagnoses in the last 5 years. The programme caters to all abilities and helps people to get and stay active. We are currently delivering Move4You virtually in Southbury.





# WHAT'S NEW

---

This document is available to view on  
our website at  
[tottenhamhotspur.com/whitewebbs](https://tottenhamhotspur.com/whitewebbs)

**Richard Serra**  
Head of Planning  
[richard.serra@tottenhamhotspur.com](mailto:richard.serra@tottenhamhotspur.com)  
07793 246252

