

Public Access to Whitewebbs Park

Current access

Current access according to THFC

Proposed Public access according to THFC

Exercises in distorting the truth

The whole of Whitewebbs Park is open space, bought for the people of Enfield way back in 1931.

In living memory there have been no restrictions on movement anywhere in the park save for the private house and the two lodge houses.

Obviously people did not walk across the golf course when it was open so as avoid interfering with play, we walked around the perimeter. At quiet times, evenings and in inclement weather we wandered freely using the many access points. The golf course has never been fenced off.

Once the golf course was closed there was complete freedom to roam, in accordance with the original lease, and grass swathes were cut. The leader of the Council gave an absolute assurance that the golf course would be open to all and gave no time limit to that assurance. (I have a video recording)

Save for the North to South stretches of the Bridleway there are no statutory footpaths. For the last 90 years people have wandered freely along all paths. Some council officials have referred to these as permissive paths. There is nothing to distinguish permissive paths from any other type of path. Custom and use for nearly a century would suggest that they are all “permissive” paths. The recently introduced categories of “permissive” and “Informal” paths is meaningless.

Tottenham Hotspur has produced a map purporting to show various categories of path. It manages to combine incompleteness with miscategorisation. A number of paths are missing and the permissive bridleway seems to be alongside the Lake at one point.

I provided Mark Bradbury, then a senior council official, with a much more accurate map three years ago.

Various references have been made over the last year or so by the Council and Spurs about creating an extra 3kms of bridleway. I couldn't work this out, there is already over 4Kms of bridleway.

The Spurs “Existing Public Access” map fails to show much of the woodland bridleway. (See the pictures)

The Proposed Public Access Map produced by Tottenham magically recognises a large section (about 3kms) of the permissive bridleway that runs through the woodland—it has been there since 1937. The London Natural History Society described its construction as “a piece of vandalism.” by the way.

Now we have the answer. They are creating the extra bridleway by drawing an orange line on a map over a bridleway that has existed for 80 years Brilliant and so economical!

This explains the other diagram which purports to show a dramatic increase in the provision of bridleway. It refers to bridle and cycleway because both are allowed to use a statutory bridleway, as are pedestrians.

The comparative openness diagram tries to fool us into thinking how much better off we will be for open space once they have put barricades around their proposed football pitches and buildings.

Up to now we have had free access to 240 acres , about 97 hectares. After the pitches we will have access to about 80 hectares. Personally, I expect that we will lose a lot more, gradually, over the next few years.

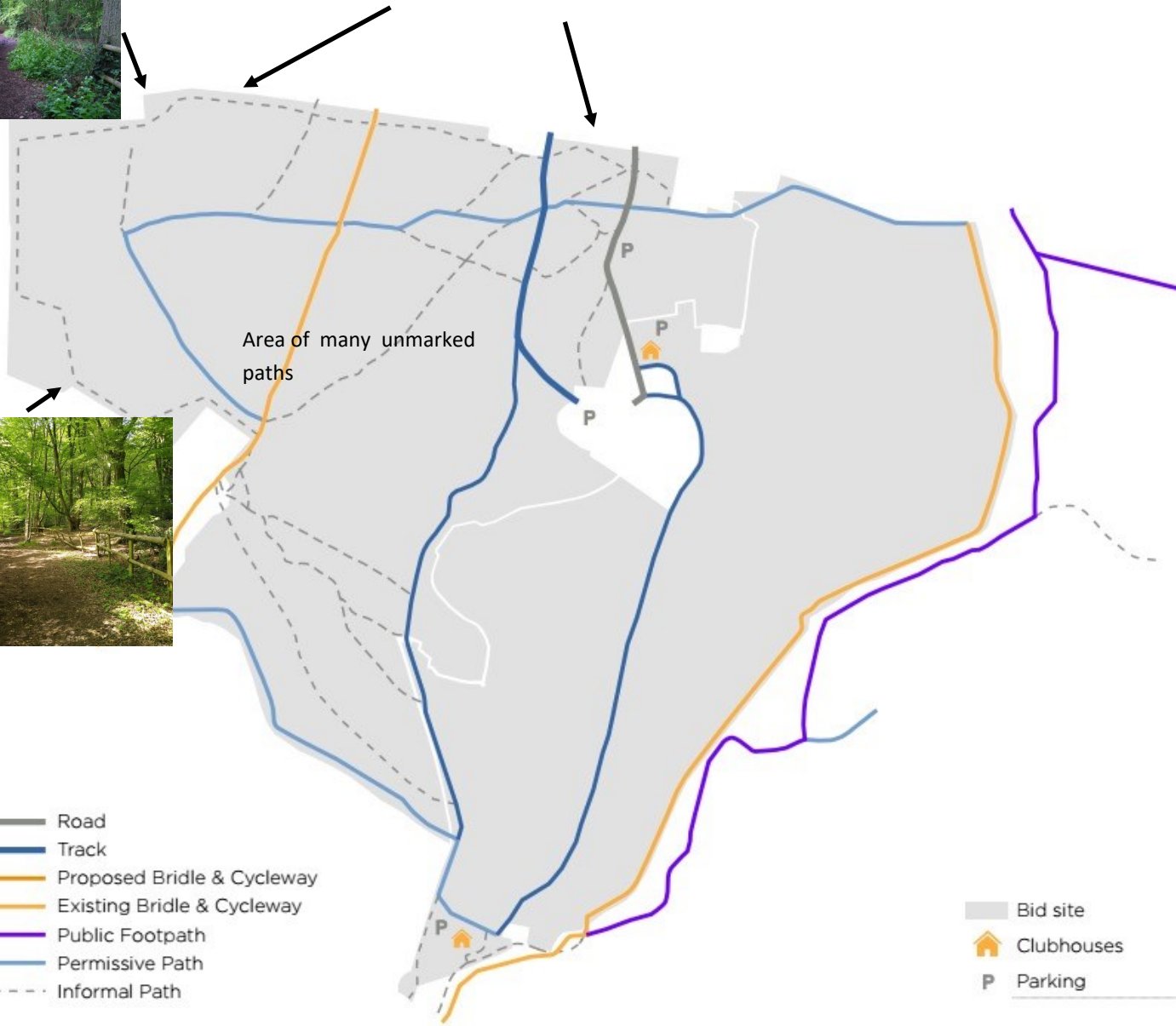
The diagram appears to show a large net gain, no it is a net loss. Do not forget this park was bought for the people of Enfield as public open space, all of it.

Note to Spurs—names of surveyors and mapmakers please, so that we can avoid using them

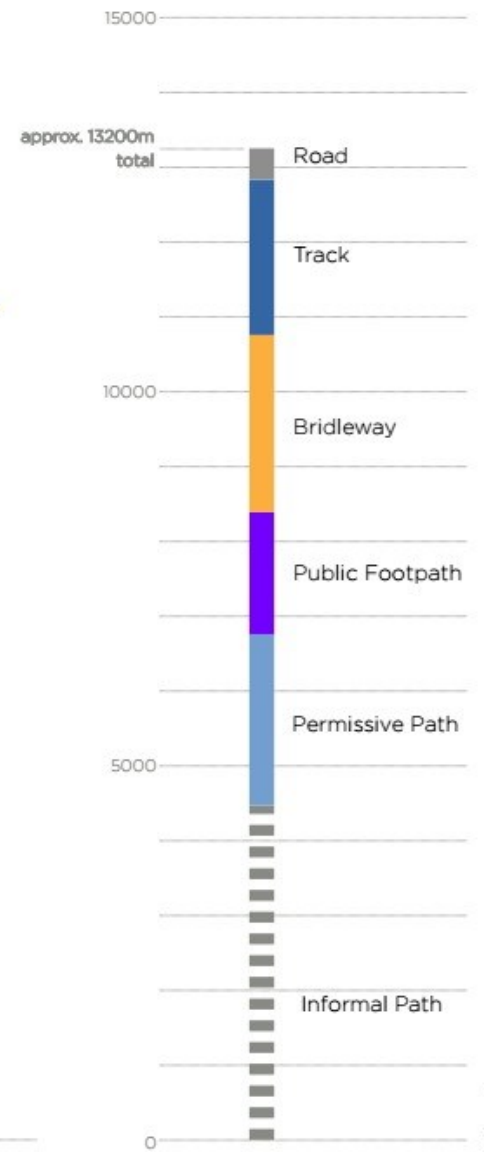
2A. EXISTING PUBLIC ACCESS



Look , no bridleway, just an informal path. Ignore the evidence



Approximate length of paths in metres within site boundary



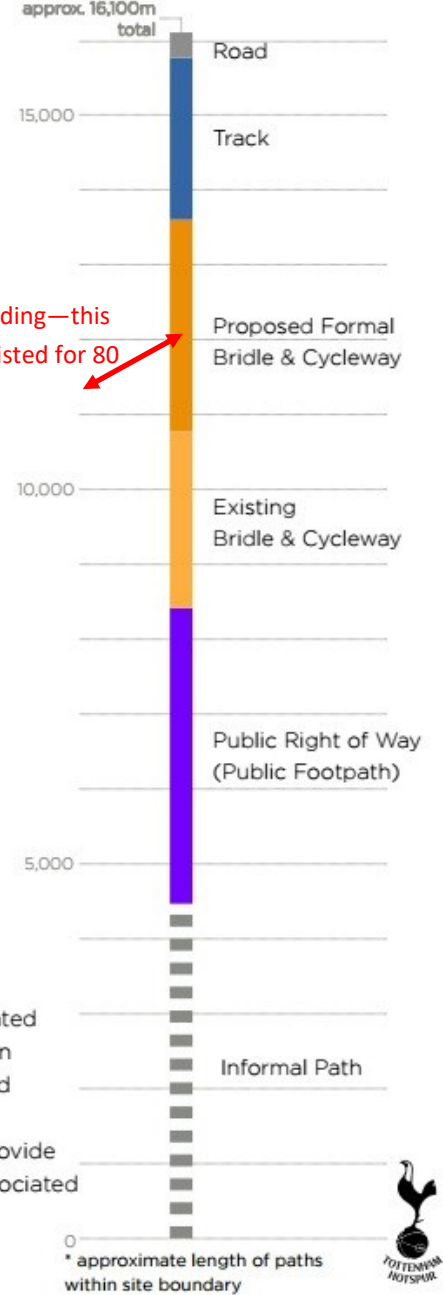
2B. PROPOSED PUBLIC ACCESS

Look, a brand new bridleway that has been there for 80 years.

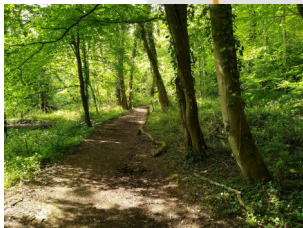
The proposal will:

- Create a site perimeter bridle and cycleway
- Upgrade the existing woodland paths and signage
- Convert all current permissive paths to Public Rights of Way (Public Footpaths)

Length of paths in metres *



Misleading—this has existed for 80 years.



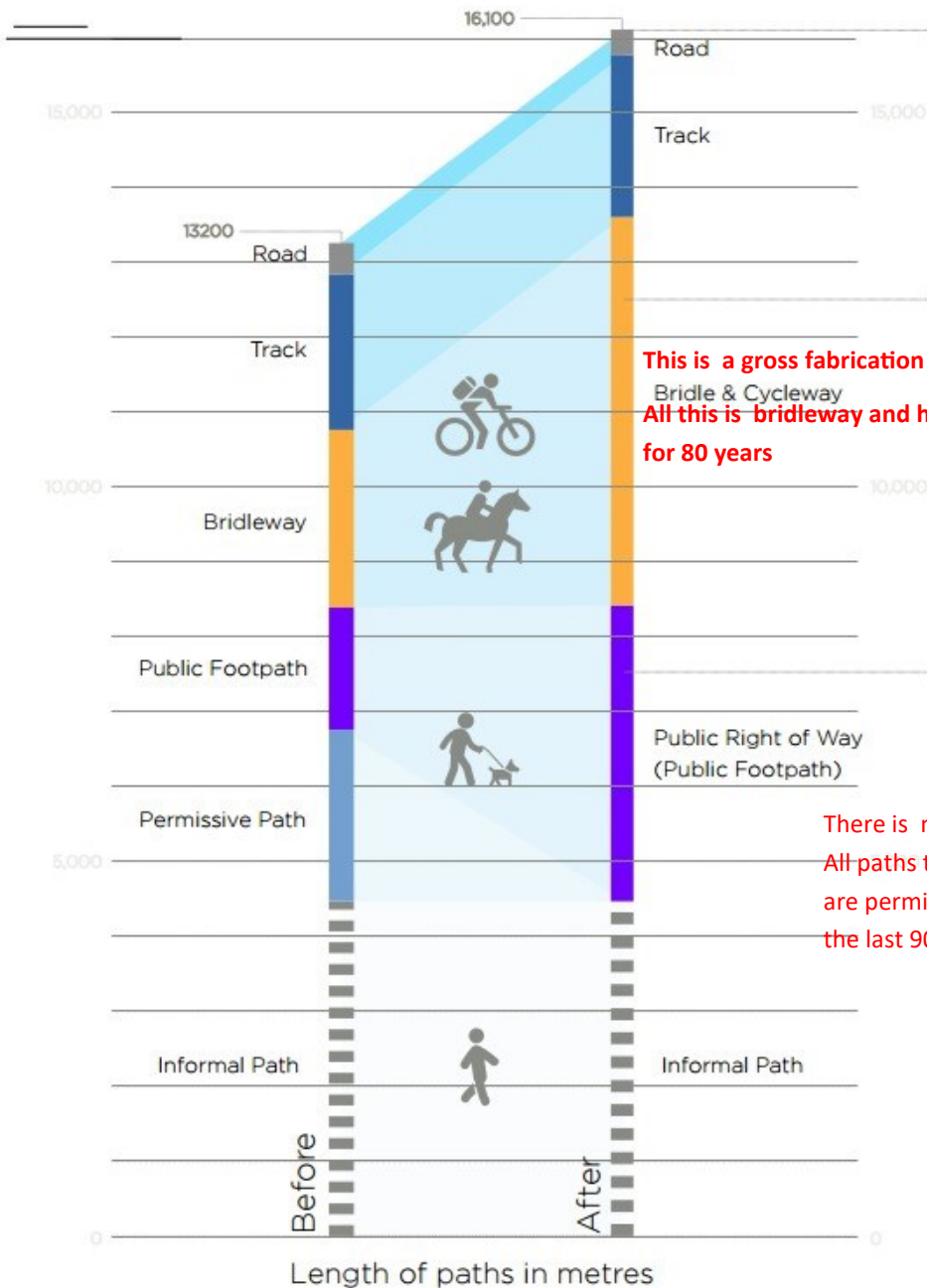
- Road
- Track
- Proposed Bridle & Cycleway
- Existing Bridle & Cycleway
- Public Footpath
- - - Informal Path

- Bid site
- P Parking
- ① Northern Club House to be retained, renovated and extended to provide built accommodation for the Women & Girls football academy and classroom space with associated parking.
- ② Southern Club House to be renovated to provide public cafe/visitor centre and WCs with associated parking.



TOTTENHAM HOTSPUR

2B. COMPARATIVE PUBLIC ACCESS



This is a gross fabrication
All this is ~~bridleway~~ and has been
for 80 years

There is no map of "permissive" paths.
All paths through the park and woodland
are permissive. They have been used for
the last 90 years.

Quantity

- 1 The total extent of the network is proposed to be extended by approximately 3km.
- 2 This would be principally achieved through an expansion of the Bridle and Cycleway network with the creation of a perimeter orbital route.
- 3 Permissive paths would be secured and made into Public Rights of Way.

Quality

The network will benefit from the enhancement and improvement of all routes, including a new wayfinding strategy and signposting, maintenance and resurfacing as appropriate.

2B. COMPARATIVE OPENNESS But misleading

When the Council decided to close the golf course the land became completely open access, in accordance with the original intentions and the lease. The reason given for closing the golf course was that it was losing money

THFC attempts to show that we are getting more open space as a result of their plan. This is not so. We will be losing 18 hectares of open space just to let THFC build astro turf and plastic reinforced pitches for their exclusive use.

